



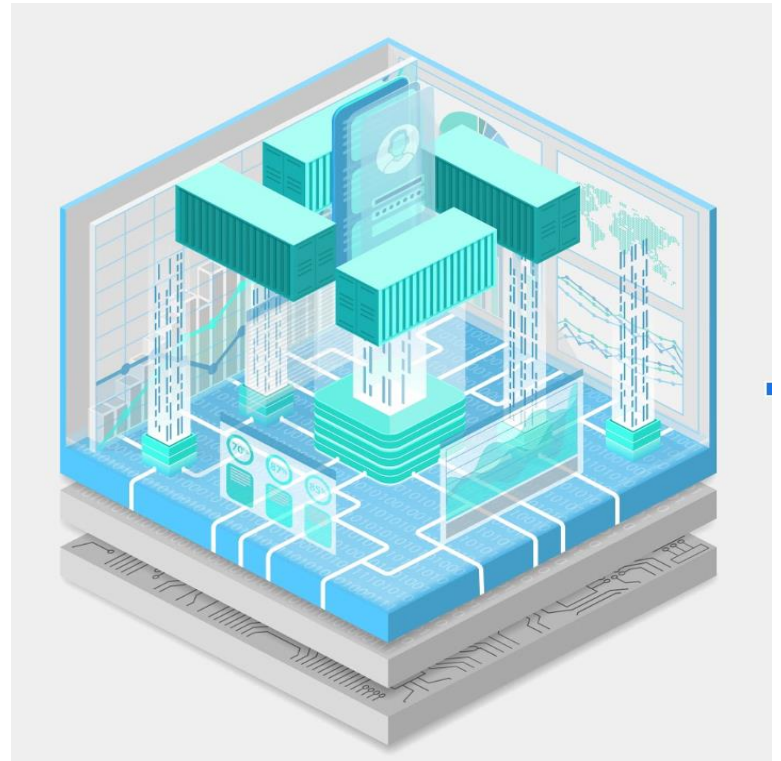
Managed Services - Container Management

Managed Services include container management by configuring, managing, and deploying containers to enable seamless deployment of cloud-native applications. It involves configuring, installing, and patching Kubernetes (K8s) pods and containers, monitoring, and optimizing efficiency.

Native Kubernetes

UnityOneCloud comes bundled as a service that helps install, customize, patch, and upgrade Kubernetes with managed native Kubernetes. It, in turn, helps us to offer the Kubernetes cluster as a service with high-performance management.

It also helps to handle different services, provide container management for multiclouds, and track all multicloud container operations on one seamless glass pane.



GKE

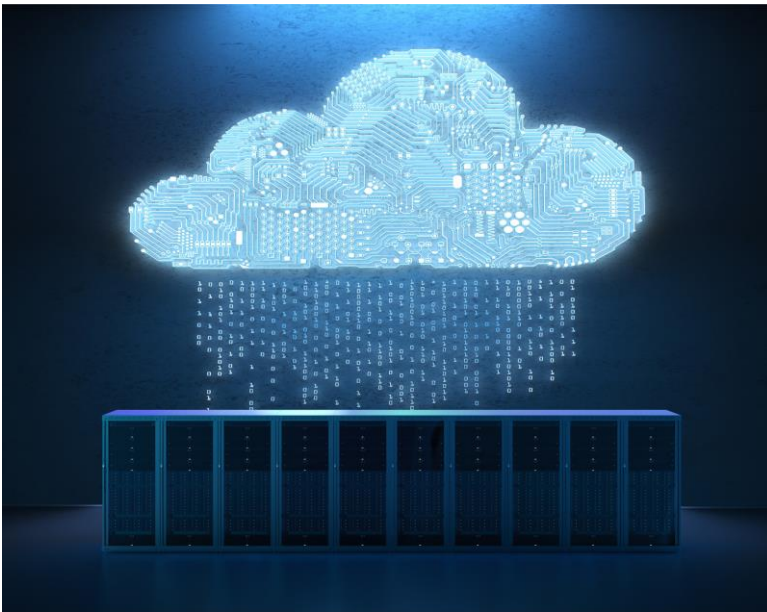
Google Kubernetes Engine provides high flexibility for organizations using containers and microservices. Containers can be run on-premises, in the Google cloud and in other environments that support Kubernetes. Google boosts the ability to deploy a cluster in seconds and seamlessly updates the production code. The platform supports features such as identity and access management, auto-scaling, auto-upgrading, stateful application support, docker image support, workload portability, and various security and compliance features.



AWS EKS

UnityOneCloud assists in managing multiple AWS accounts. Assets are displayed under different categories in tabs. The Instances tab displays all EC2 instances with a variety of action buttons such as Stop/Start, Terminate, etc. If enabled, Monitoring stats can also be viewed. By default, AWS CloudWatch monitoring graphs can be visualized.

Manage several accounts using a single window and visualize the health of different instances and corresponding network elements. This platform also provides a real-time representation of instances, snapshots, volumes, S3 buckets, auto-scaling groups, security groups, devices, and users.



Azure Kubernetes Service

Our Kubernetes controller is used to display Pods and Containers with CPU/Memory usage. Users may also view UnityOneCloud's list of resources, VM, and containers under different tabs. UnityOneCloud can be used to manage multiple Azure accounts, and there is an option to view resources by different types, locations, categories, and plans.



UnitedLayer Advantage

UnitedLayer provides the Colocation services from one of the largest data centers in San Francisco, USA, at 200 Paul Ave. We put you on the fast track to growth and help you realize the Full Value of your investment in any Cloud Infrastructure Solutions. We Design, Build, and Manage Enterprise-Grade Colocation Solutions that meet the Performance, Security, and Scalability to serve your Unique Business Needs.

For more information about UnitedLayer, visit us online at <https://www.unitedlayer.com/>

UnitedLayer
200 Paul Ave #110
San Francisco, CA 94124, USA

For General queries/Sales
Call: +1-888-853-7733
Email: sales@unitedlayer.com